

Curriculum PLUS

 **REDHILL**
ACADEMY TRUST

Equality and Achievement

CO-CURRICULAR
PROGRAMME

2023-24



Welcome to Curriculum Plus



Our academy promotes activities that widen our students' experiences through our Curriculum Plus programme. This includes opportunities to participate in sport clubs, the performing arts, trips abroad, cultural experiences and character-building challenges.

These experiences help to develop our students' self-confidence, build their resilience, and feel a sense of belonging. They also challenge our students to learn new skills and find a passion that they can take with them throughout their life.

Students can take part in activities they already love or choose to try something brand new. We encourage all students to get involved and choose at least one or two Curriculum Plus activities.

Find out more about our Curriculum Plus programme by following [@bolsover_school](https://twitter.com/bolsover_school) and [@RHTCoCurricular](https://twitter.com/RHTCoCurricular) on Twitter.

Our guiding principles

- 1 High expectations for all
- 2 Widening students' experiences
- 3 Outstanding teaching
- 4 Committed to equality & diversity
- 5 Celebrating academic achievement



An Introduction to Curriculum*Plus*

At The Bolsover School, we firmly believe that student life is about more than attending lessons and achieving academic success. In fact, it should extend far beyond this, allowing students to take the opportunity to experience new activities, developing skills and interests for life.

We want all of our students to leave The Bolsover School having experienced as many enriching opportunities and experiences as possible, in order for them to become well rounded individuals with a variety of interests and hobbies, in addition to a comprehensive academic experience.

We have therefore developed an extensive offer of CurriculumPlus activities that pupils can participate in on a weekly basis and we would encourage each and every student to try to attend at least one of the activities outlined in this CurriculumPlus guide.

We would appreciate it if you could take the time to go through the activities outlined as part of the CurriculumPlus programme and discuss the options available to them.

Many of the activities take place during break and lunchtime and so are easily accessible. Students must let the member of staff know if they are attending a session by booking a place with that member of staff.

Students must also stay for the duration of any session, leaving only when the session is complete to walk home, catch the late bus (see below) or be collected by parents. For any after school activities, we offer a free mini bus service on Tuesday, Wednesday and Thursday and places can be booked at student services, no later than the start of lunchtime on the day the late bus is required.

This can be done by sending an email to latebus@thebolsoverschool.org.uk. The after school activities all finish at 4pm and the late bus departs at 4.15pm. Students must wait in the library until collected for the late bus.

As the year progresses, more activities will be added and some may change so please listen out for any updates from your form tutor. If you have any queries or questions, please contact Miss Owen (a.owen@thebolsoverschool.org.uk).

Textiles

| | |
|---|-----------------------------------|
| STAFF MEMBER RUNNING ACTIVITY | Miss Martin |
| YEAR OR KEY STAGE SUITABLE FOR | KS4 |
| DAY AND TIME OF ACTIVITY | Tuesday Afterschool (Week 1) |
| LOCATION OF ACTIVITY | RF7 |
| ACTIVITY LIMIT (IF APPLICABLE) | Students taking GCSE Art Textiles |
| DETAILS OF Curriculum<i>Plus</i> ACTIVITY GCSE students of Art Textiles are invited to use this time to catch up on any missed work and complete their coursework. Miss Martin will be on hand to help alongside students getting more time to spend using the schools' textiles equipment. | |

GEOG STARS (KS4)

| | |
|---------------------------------------|---------------------------------|
| STAFF MEMBER RUNNING ACTIVITY | ABA, KEV, GFI |
| YEAR OR KEY STAGE SUITABLE FOR | KS4 – Year 11 |
| DAY AND TIME OF ACTIVITY | Week 1 Wednesday – After school |
| LOCATION OF ACTIVITY | BF5 & BF7 |
| ACTIVITY LIMIT (IF APPLICABLE) | |

DETAILS OF Curriculum*Plus* ACTIVITY

Year 11 Geographers – if you are looking to improve your chances of achieving the grade you want in GCSE Geography, then this is the club for you: GEOG STARS!

S = Situation (What is your current situation with the specific topic?)

T = Target (Where do you want to be/which areas could you improve?)

A = Action (Use the Curriculum+ time to work on upskilling)

R = Result (How did it go? What next?)

S = Success (Remember, success is the sum of small efforts built up over time!)

There will be 2 different sessions occurring.

- In BF7 students will be using the time to start revising the key content of the weekly topic (Natural Hazards, Ecosystems, Coasts, Rivers, Urban Challenges, Changing Economic World, Resource Management)**
- In BF5, students will be practicing exam questions linked the weekly topic.**

AROUND THE WORLD (KS3)

| | |
|---------------------------------------|---------------------------------|
| STAFF MEMBER RUNNING ACTIVITY | GFI |
| YEAR OR KEY STAGE SUITABLE FOR | KS3 |
| DAY AND TIME OF ACTIVITY | Week 2 Wednesday - After school |
| LOCATION OF ACTIVITY | BF5 |
| ACTIVITY LIMIT (IF APPLICABLE) | |

DETAILS OF Curriculum*Plus* ACTIVITY

Around The World club is the CurriculumPlus activity for you if you are looking to expand your knowledge of the world we live in.

We will cover a huge variety of topics, from climate change and sustainability to the fragile Arctic environments.

Some weeks you will watch a documentary, and some weeks you will be creating your own sustainable city- every session will be different and exciting!

All of KS3 are welcome to Around The World club with Miss Fisher (year 7, 8 and 9).



Session Title: History Revision (GCSE)

| | |
|-----------------------------------|----------------------------|
| STAFF MEMBER RUNNING ACTIVITY | Mr Bramley Miss Bennett |
| YEAR OR KEY STAGE SUITABLE FOR | Year 10 |
| DAY AND TIME OF ACTIVITY | Wednesday Afterschool |
| LOCATION OF ACTIVITY | BF1 |
| ACTIVITY LIMIT (IF APPLICABLE) | |

DETAILS OF Curriculum*Plus* ACTIVITY:

Join Mr Bramley and Miss Bennett to revise each of your key topics:

- Medicine in Britain, c1250-Present (**Paper 1**)
- The British Sector of the Western Front, 1914–18: injuries, treatment and the trenches (**Paper 1**)
- Anglo-Saxon and Norman England, c1060-88 (**Paper 2**)
- American West, c1835-c1895 (**Paper 2**)
- Weimar and Nazi Germany, 1918-1939 (**Paper 3**)

We will also look at exam techniques and past papers to help prepare you for your examinations.

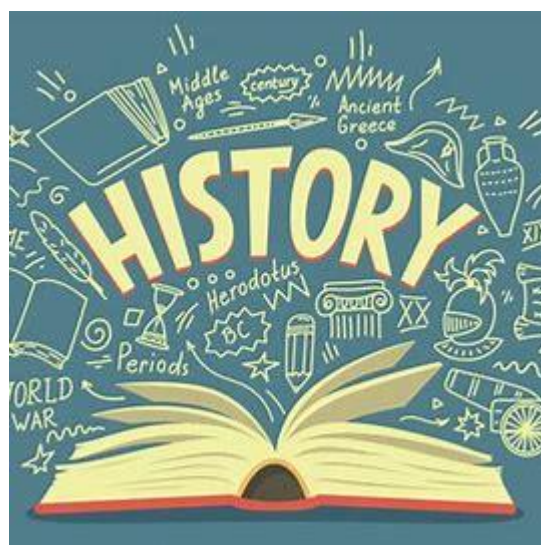


GCSE History

| | |
|---------------------------------------|--------------------------------|
| STAFF MEMBER RUNNING ACTIVITY | Miss Bennett & Mr Bramley |
| YEAR OR KEY STAGE SUITABLE FOR | GCSE History – Year 11 |
| DAY AND TIME OF ACTIVITY | Wednesday Afterschool – Week 1 |
| LOCATION OF ACTIVITY | BF2 |
| ACTIVITY LIMIT (IF APPLICABLE) | |

Calling Y10 students who have missed studying history! This club gives you the opportunity to study and be entered for an extra GCSE, a GCSE in History. The GCSE involves three papers and you will have the opportunity to study Medicine through Time, Anglo-Saxon & Norman England, The American West and Weimar & Nazi Germany.

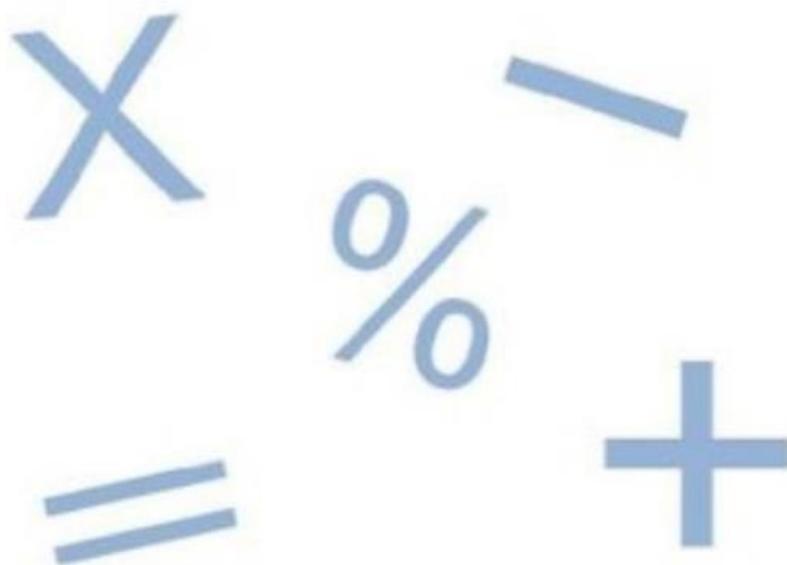
An amazing opportunity to study for an extra GCSE!



GCSE Maths

| | |
|---------------------------------------|--|
| STAFF MEMBER RUNNING ACTIVITY | Maths staff |
| YEAR OR KEY STAGE SUITABLE FOR | Year 10/11 (GCSE) |
| DAY AND TIME OF ACTIVITY | Thursday Week 2 – Afterschool |
| LOCATION OF ACTIVITY | Maths block – upstairs (higher PF1, foundation PF3). |
| ACTIVITY LIMIT (IF APPLICABLE) | |

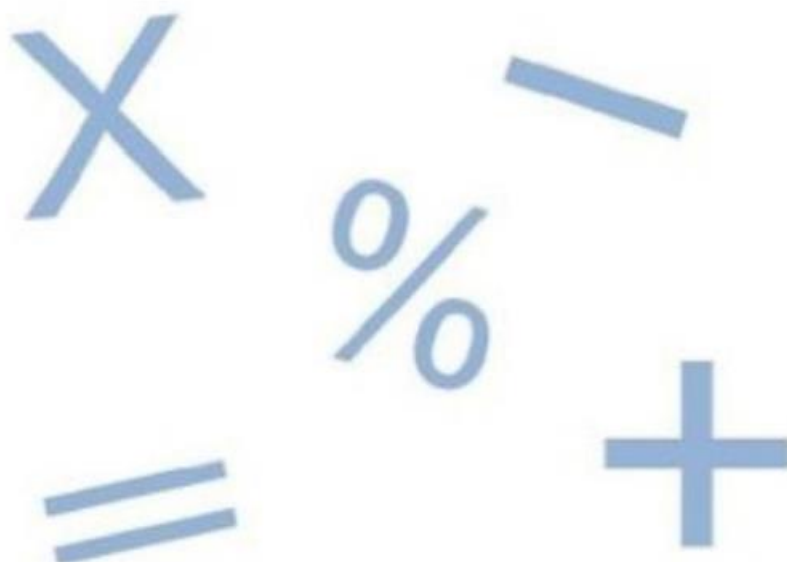
All students from Year 10 and Year 11 are invited to attend this session. This will be an opportunity to develop their knowledge and understanding, to complete homework, catch up on any missed work or support their revision.



Further Maths

| | |
|---------------------------------------|-------------------------------|
| STAFF MEMBER RUNNING ACTIVITY | Maths staff |
| YEAR OR KEY STAGE SUITABLE FOR | Year 11 – invite only |
| DAY AND TIME OF ACTIVITY | Thursday Week 2 – Afterschool |
| LOCATION OF ACTIVITY | Maths block – upstairs (PF2) |
| ACTIVITY LIMIT (IF APPLICABLE) | |

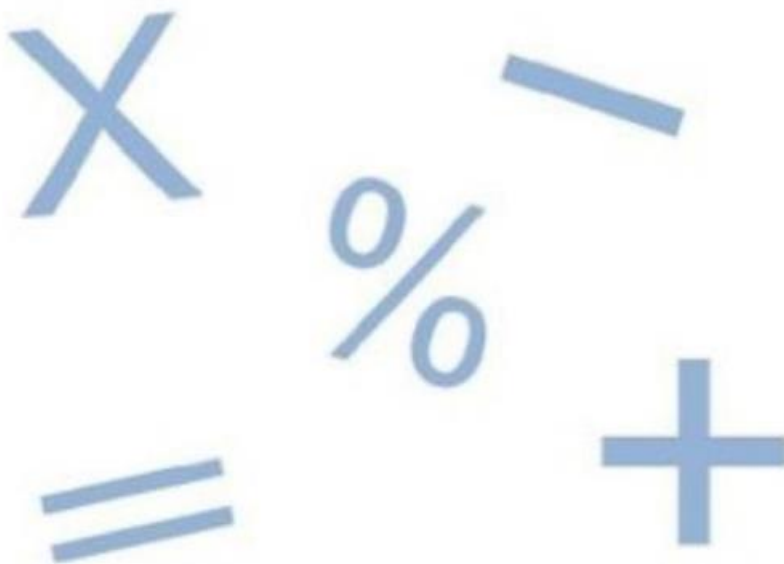
An opportunity for invited students to gain an additional GCSE in Further Maths.



KS3 Maths/Sparx Homework

| | |
|---------------------------------------|--|
| STAFF MEMBER RUNNING ACTIVITY | Maths staff |
| YEAR OR KEY STAGE SUITABLE FOR | KS3 (Year 7, 8 and 9) |
| DAY AND TIME OF ACTIVITY | Thursday Week 2 – Afterschool |
| LOCATION OF ACTIVITY | Maths block – upstairs and PG1 on Tuesday lunchtimes |
| ACTIVITY LIMIT (IF APPLICABLE) | |

An opportunity to further develop skills, as well as gain any additional help with homework or topics that you might be particularly struggling with.



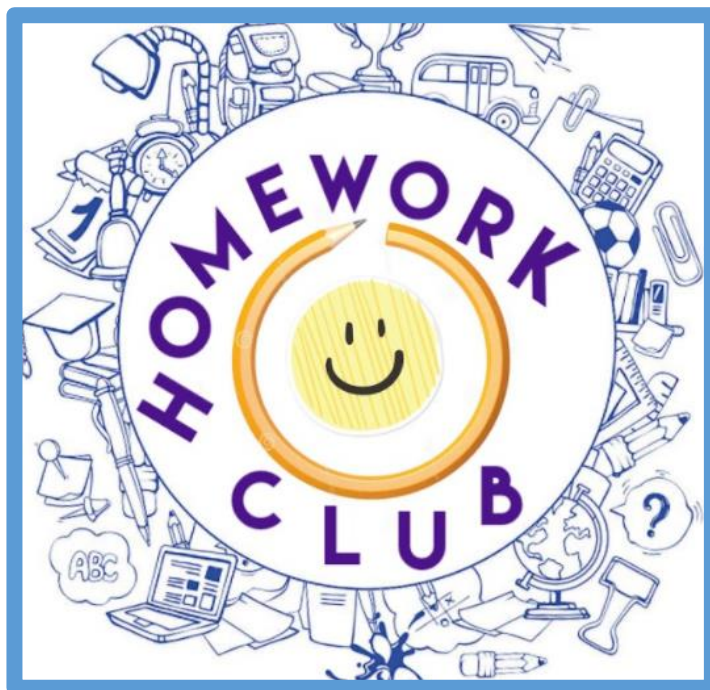
Homework Club

| | |
|---------------------------------------|--|
| STAFF MEMBER RUNNING ACTIVITY | Miss King |
| YEAR OR KEY STAGE SUITABLE FOR | All years |
| DAY AND TIME OF ACTIVITY | Tuesday, Wednesday & Thursday : 3.00 – 4.00 pm |
| LOCATION OF ACTIVITY | Library |
| ACTIVITY LIMIT (IF APPLICABLE) | |

DETAILS OF Curriculum*Plus* ACTIVITY

Need computer access? Want a quiet study area? Require some homework support?

Come to Homework Club to keep up to date with homework tasks and boost your study skills.



Let's make music!

| | |
|--|------------------------------------|
| STAFF MEMBER RUNNING ACTIVITY | Mr Stacey |
| YEAR OR KEY STAGE SUITABLE FOR | KS3 |
| DAY AND TIME OF ACTIVITY | Monday and Wednesday lunchtime |
| LOCATION OF ACTIVITY | Practice rooms and Music classroom |
| ACTIVITY LIMIT (IF APPLICABLE) | |
| DETAILS OF Curriculum<i>Plus</i> ACTIVITY An open department for you to come down and make Music using the resources in the practice rooms and GG4. Loads of bands started by just getting together and jamming!! Could we have the next chart topping band at The Bolsover School?.....why not!! | |

GCSE Music

| | |
|---|------------------------------------|
| STAFF MEMBER RUNNING ACTIVITY | Mr Stacey |
| YEAR OR KEY STAGE SUITABLE FOR | KS4 Music students only |
| DAY AND TIME OF ACTIVITY | Tuesday and Thursday lunchtime |
| LOCATION OF ACTIVITY | Practice rooms and Music classroom |
| ACTIVITY LIMIT (IF APPLICABLE) | |
| DETAILS OF Curriculum<i>Plus</i> ACTIVITY An open department for you to come down and practice performance pieces, catch up on composition coursework or talk through your set study pieces. This time can invaluable and you should be making the most of it! | |


Choir and musical theatre

| | |
|---|-------------------------|
| STAFF MEMBER RUNNING ACTIVITY | Mr Stacey and Mrs Booth |
| YEAR OR KEY STAGE SUITABLE FOR | KS3 and KS4 |
| DAY AND TIME OF ACTIVITY | Tuesday after school |
| LOCATION OF ACTIVITY | GG2/GG4 |
| ACTIVITY LIMIT (IF APPLICABLE) | |
| DETAILS OF Curriculum<i>Plus</i> ACTIVITY Singing is a fantastic activity for your mental health and generally just making you feel awesome!! It's so incredibly enjoyable especially when performing as a group. Stay with us on a Tuesday after school to sing as a group to some of the best songs of all time including some of the biggest tunes from the musicals. We will be working towards lots of performances throughout the year and we'd love for you to get involved!! | |

Create your own Music using Music Technology like the pro's do!

| | |
|---|---------------------------|
| STAFF MEMBER RUNNING ACTIVITY | Mr Stacey and DIGIT MUSIC |
| YEAR OR KEY STAGE SUITABLE FOR | KS3 and KS4 |
| DAY AND TIME OF ACTIVITY | Thursday after school |
| LOCATION OF ACTIVITY | GG4 |
| ACTIVITY LIMIT (IF APPLICABLE) | 16 |
| DETAILS OF Curriculum<i>Plus</i> ACTIVITY <p>Under the direction of professional DJ and composer Trekkah from Nottingham you will be taught how to compose using Music technology. This is a fantastic opportunity and is not to be missed. This is an 8 week project and you must sign up to with Mr Stacey as numbers are limited.</p> | |

KS4 Design and Technology

| | |
|--|------------------------------|
| STAFF MEMBER RUNNING ACTIVITY | Miss Whaplington |
| YEAR OR KEY STAGE SUITABLE FOR | Year 11 |
| DAY AND TIME OF ACTIVITY | Thursday 3-4pm, week 1 and 2 |
| LOCATION OF ACTIVITY | RG1 |
| ACTIVITY LIMIT (IF APPLICABLE) | N/A |
| <p>DETAILS OF CurriculumPlus ACTIVITY</p> <p>Are you struggling with your NEA? Not started practical yet? Need some additional advice?</p> <p>Please join Miss Whaplington on Thursdays between 3.00pm -4.00pm. You can complete computer work, design work, practical or revision.</p>  | |

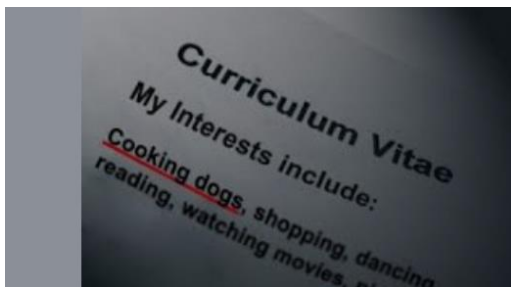
Future Plans

| | |
|---------------------------------------|--|
| STAFF MEMBER RUNNING ACTIVITY | Mrs D Crossley (CAREERS) |
| YEAR OR KEY STAGE SUITABLE FOR | Year 11 |
| DAY AND TIME OF ACTIVITY | Monday after school – please note no late bus is available |
| LOCATION OF ACTIVITY | To be confirmed |
| ACTIVITY LIMIT (IF APPLICABLE) | |

DETAILS OF Curriculum*Plus* ACTIVITY

**Do you need help in applying for college, sixth form or an apprenticeship?
Do you need help in preparing a CV?**

If there is *any* help you need to move forward after Year 11, please come along.



English Plus

| | |
|---------------------------------------|-------------------------------------|
| STAFF MEMBER RUNNING ACTIVITY | The English team |
| YEAR OR KEY STAGE SUITABLE FOR | KS4 |
| DAY AND TIME OF ACTIVITY | Wednesday 3-4pm (Week 2 for Y11) |
| LOCATION OF ACTIVITY | YF1 and YF2 |
| ACTIVITY LIMIT (IF APPLICABLE) | All welcome |

DETAILS OF Curriculum*Plus* ACTIVITY

Come and join the English team:

- make your *Macbeth*, magnificent
- make your poetry, perfect
- make your description, divine

We will be working on Literature and Language for all classes and all skills. Bring your revision or something that you are struggling with, or come along and join in with the group tasks. It's a great chance to catch up with anything that you have missed or anything that you would like to improve.



English Breakfast Club

| | |
|---------------------------------------|------------------------------|
| STAFF MEMBER RUNNING ACTIVITY | The English team |
| YEAR OR KEY STAGE SUITABLE FOR | Y11 |
| DAY AND TIME OF ACTIVITY | Friday morning 7:45 – 8:25am |
| LOCATION OF ACTIVITY | YF2 |
| ACTIVITY LIMIT (IF APPLICABLE) | All welcome |

DETAILS OF Curriculum*Plus* ACTIVITY

Year 11 – every second counts, and what better way to use your time in the mornings, than by joining the English team in revising key skills, killer quotes and wonderful writing in the comfort of the English department. Every Friday morning, we will be in YF2 to go over essential English items to get you fully prepared and super confident in all aspects of English Literature and Language.



MFL Club

| | |
|---------------------------------------|-----------------|
| STAFF MEMBER RUNNING ACTIVITY | Mr Drury |
| YEAR OR KEY STAGE SUITABLE FOR | all |
| DAY AND TIME OF ACTIVITY | Every lunchtime |
| LOCATION OF ACTIVITY | GF1 |
| ACTIVITY LIMIT (IF APPLICABLE) | 30 |

DETAILS OF Curriculum*Plus* ACTIVITY

Do you need a place to do your French/German/Spanish homework or access the technology to do it?

Do you want to come and do some online French/German/Spanish revision work, maybe play some Blooket/Quizlet Live/Kahoot?

Do you want to write your penfriend letter?

Do you need help understanding or remembering what you were taught in class?

Do you have a question about your French/German/Spanish work?

12:20 – 12:45 every day – bring your lunch and come and go as you wish!



KS4 French GCSE booster

| | |
|---------------------------------------|----------------------------------|
| STAFF MEMBER RUNNING ACTIVITY | Mr Drury |
| YEAR OR KEY STAGE SUITABLE FOR | Y9-11 |
| DAY AND TIME OF ACTIVITY | Every Thursday week 1, 3pm – 4pm |
| LOCATION OF ACTIVITY | GF1 |
| ACTIVITY LIMIT (IF APPLICABLE) | 30 |

DETAILS OF Curriculum*Plus* ACTIVITY

We'll be doing some vocabulary practice, speaking practice, writing practice, grammar boosters – basically everything you need to get a great grade in your exams, using revision techniques that are proven to work.

Come along and see how much further you can go.



Bolsover Opinions

| | |
|--------------------------------|-----------------------|
| STAFF MEMBER RUNNING ACTIVITY | JWA/JAL |
| YEAR OR KEY STAGE SUITABLE FOR | KS3 + KS4 |
| DAY AND TIME OF ACTIVITY | Tuesday 3:00 – 4:00pm |
| LOCATION OF ACTIVITY | YG1/YG2 |
| ACTIVITY LIMIT (IF APPLICABLE) | 32 |

DETAILS OF CurriculumPlus ACTIVITY

HAVE YOUR SAY THE BOLSOVER WAY

Do you believe your voice matters? Do you want to make a change?

The TBS Times and Debate Club might just be for you!

The TBS times and Debate Club is a creative space for you to voice your opinions, build your confidence and speak persuasively.

This club will work on a fortnightly basis. One week you will debate with your peers, the next week you will transfer these ideas into powerful written rhetoric for the student newspaper.

This newspaper will go out to staff, students and the wider community to read and enjoy.

We can offer:

- Experience in journalism and building a portfolio
- Guest speakers and workshops
- Debate competitions
- Refreshments



I'm Board!

| | |
|---------------------------------------|-----------------------|
| STAFF MEMBER RUNNING ACTIVITY | Mr Topley |
| YEAR OR KEY STAGE SUITABLE FOR | All |
| DAY AND TIME OF ACTIVITY | Thursday after school |
| LOCATION OF ACTIVITY | The Hive |
| ACTIVITY LIMIT (IF APPLICABLE) | NA |

DETAILS OF Curriculum*Plus* ACTIVITY

Do you enjoy playing board games like scrabble, cranium and monopoly? Are you challenged by connect 4 or Jenga?

I'm board is for you! During this session, you will have the opportunity to play a variety of board games or you may wish to bring in your own!

It is a chance to relax and unwind after a busy day at school, playing the games you may enjoy.



Dungeons and Dragons

| | |
|---------------------------------------|---------------------------------------|
| STAFF MEMBER RUNNING ACTIVITY | Mx G Whitaker |
| YEAR OR KEY STAGE SUITABLE FOR | All |
| DAY AND TIME OF ACTIVITY | Thursday Week 1 & Week 2, 3:00 – 4:30 |
| LOCATION OF ACTIVITY | RG8 |
| ACTIVITY LIMIT (IF APPLICABLE) | 2 groups of 6 |

DETAILS OF Curriculum*Plus* ACTIVITY

The heart of Dungeons & Dragons is the collaborative storytelling experience. The DM creates a narrative, sets the stage, and presents challenges and scenarios for the players to overcome. Players interact with the world and make decisions that shape the course of the story. D&D adventures can range from exploring ancient ruins, battling monsters, solving mysteries, and interacting with non-player characters (NPCs). The game is open-ended, allowing players to pursue their goals and interests within the world created by the DM. The game is typically played with a set of polyhedral dice, including the iconic 20-sided die (d20). Players use these dice to determine the outcomes of various actions, such as attacking monsters, solving puzzles, and avoiding traps.

This Curriculum Plus opportunity has limited availability as each adventure is limited to a party of 6 adventurers, one party adventuring on Thursday Week 1 and a separate party adventuring on Thursday Week 2.



Bolsover Book Club

| | |
|---------------------------------------|------------------------------|
| STAFF MEMBER RUNNING ACTIVITY | Mr Hallam / Mrs Gillian |
| YEAR OR KEY STAGE SUITABLE FOR | KS3 & KS4 |
| DAY AND TIME OF ACTIVITY | Thursday 3-4pm Every week |
| LOCATION OF ACTIVITY | YG6 |
| ACTIVITY LIMIT (IF APPLICABLE) | 32 |

Bolsover Book Club

Do you like to get lost in a good book?

Do you enjoy discussing stories you've read with others?

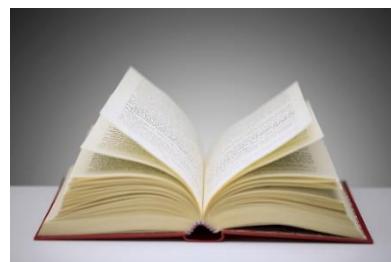
The Bolsover Book Club is the place for you.

The Book Club will be the perfect opportunity for you to be with others who share a common love of reading. If you want to improve your reading skills, which are pivotal for your success in life, the Bolsover Book Club will certainly help you on that journey.

In our sessions we may:

- Discuss books and recommend books to others that we have enjoyed recently.
- Enjoy reading our own books in a calm space.
- Read books that are on the KS3/KS4 reading passport.

If you're interested in coming along, please let Mr Hallam or Mrs Gillian know 😊



Deutschklub

| | |
|---|-------------------------------|
| STAFF MEMBER RUNNING ACTIVITY | Mr Lee |
| YEAR OR KEY STAGE SUITABLE FOR | KS4 German |
| DAY AND TIME OF ACTIVITY | Thursday Week 1 – Afterschool |
| LOCATION OF ACTIVITY | GG1 |
| ACTIVITY LIMIT (IF APPLICABLE) | |
| DETAILS OF Curriculum<i>Plus</i> ACTIVITY Prepare for GCSE German – there may even be a few sweet treats laying around to give you a little boost!  | |

The Science behind food

| | |
|--|--------------------------|
| STAFF MEMBER RUNNING ACTIVITY | Mrs Crossley |
| YEAR OR KEY STAGE SUITABLE FOR | KS4 – Y11 |
| DAY AND TIME OF ACTIVITY | Wednesday Week 1 - 3-4pm |
| LOCATION OF ACTIVITY | RG4 |
| ACTIVITY LIMIT (IF APPLICABLE) | |
| <p>DETAILS OF Curriculum<i>Plus</i> ACTIVITY</p> <p><u>NEA 1 – 15% Final GCSE Food grade</u></p> <p>Ever wondered how the raising agent steam, is created in baked products.</p> <p>During these sessions you will have the opportunity to explore the science behind “steam”:</p> <p>What is it?</p> <p>How does it work?</p> <p>What happens to choux pastry products, if you change the:</p> <ul style="list-style-type: none"> • type of liquid, • temperature of the oven, • type of flour • type of fat used <p>So come and join the science behind food session to find out and boost your performance in Food.</p> | |

STEAM

◦ Steam is a raising agent when a mixture has a high proportion of liquid which is then cooked at a high temperature .

◦ As the water is then turned into steam.

Such as

◦ Yorkshire puddings

◦ Choux pastry

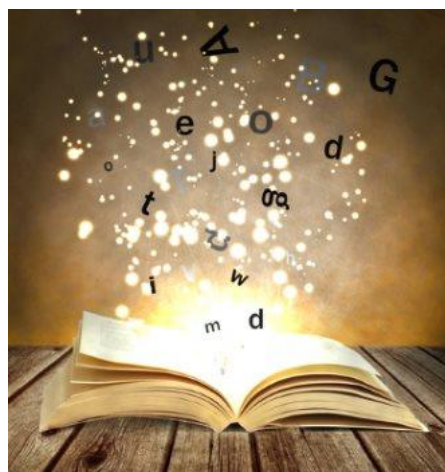
◦ Flaky and rough puff pastry.



Aspiring Authors Society

| | |
|---------------------------------------|---------------------------|
| STAFF MEMBER RUNNING ACTIVITY | Miss K Brayford |
| YEAR OR KEY STAGE SUITABLE FOR | All years |
| DAY AND TIME OF ACTIVITY | Thursday Week 1 3:00-4:00 |
| LOCATION OF ACTIVITY | YG5 |
| ACTIVITY LIMIT (IF APPLICABLE) | 30 |

DETAILS OF Curriculum*Plus* ACTIVITY



Do you constantly narrate your own life? Are you always trying to come up with a better adjective or phrase to describe something? Do you have an incredible sense of achievement when you casually use a metaphor without meaning to?

If you answered yes to any of the above (or if you just like writing) then the Aspiring Authors Society is the place for you. Once a fortnight, come and join us in YG5 where you can either work on a specially selected writing stimulus, enter a national creative writing competition (with prizes) or simply write your own journal entry, poem or story.

You don't need to be naturally "good" at writing, you just have to turn up with a can-do attitude, an open mind and a willingness to use your imagination.

And sometimes there might be biscuits.

Let's act!

| | |
|---|---------------------------------|
| STAFF MEMBER RUNNING ACTIVITY | Mrs Lyne |
| YEAR OR KEY STAGE SUITABLE FOR | Ks3 and Ks4 |
| DAY AND TIME OF ACTIVITY | Lunchtimes Monday - Thursday |
| LOCATION OF ACTIVITY | Drama studio |
| ACTIVITY LIMIT (IF APPLICABLE) | |
| DETAILS OF Curriculum<i>Plus</i> ACTIVITY Please come and join us in the Drama studio to work on and hone those Thespian talents! We would love to see you explore the wonderful subject of Drama with us! | |

Musical theatre

| | |
|--|-----------------------------------|
| STAFF MEMBER RUNNING ACTIVITY | Mrs Lyne and Mr Stacey |
| YEAR OR KEY STAGE SUITABLE FOR | Ks3 and Ks4 |
| DAY AND TIME OF ACTIVITY | After school Tuesday and Thursday |
| LOCATION OF ACTIVITY | Drama studio |
| ACTIVITY LIMIT (IF APPLICABLE) | |
| DETAILS OF Curriculum<i>Plus</i> ACTIVITY A fantastic opportunity to rehearse for our up-and-coming production. Whatever your interest, acting, production, make-up, costume you'll be made welcome in helping us achieve the most professional of productions. | |

Art open room

| | |
|---|--|
| STAFF MEMBER RUNNING ACTIVITY | Miss Deaton |
| YEAR OR KEY STAGE SUITABLE FOR | Ks4 |
| DAY AND TIME OF ACTIVITY | Tuesday, Wednesday and Thursday Lunchtimes |
| LOCATION OF ACTIVITY | Art classrooms |
| ACTIVITY LIMIT (IF APPLICABLE) | |
| DETAILS OF Curriculum<i>Plus</i> ACTIVITY Both Art rooms are open for you to continue making progress on your projects with the support of your staff members. Please take this opportunity to ensure your work is Nothing but the best! | |

GCSE Art and Photography

| | |
|---|----------------------|
| STAFF MEMBER RUNNING ACTIVITY | Miss Deaton |
| YEAR OR KEY STAGE SUITABLE FOR | Ks4 |
| DAY AND TIME OF ACTIVITY | Tuesday after school |
| LOCATION OF ACTIVITY | Art classrooms |
| ACTIVITY LIMIT (IF APPLICABLE) | |
| DETAILS OF Curriculum<i>Plus</i> ACTIVITY Both Art rooms are open for you to continue making progress on your projects with the support of your staff members. Please take this opportunity to ensure your work is Nothing but the best! | |

Art and Photography

| | |
|---|------------------------|
| STAFF MEMBER RUNNING ACTIVITY | Miss Deaton |
| YEAR OR KEY STAGE SUITABLE FOR | Ks3 |
| DAY AND TIME OF ACTIVITY | Wednesday after school |
| LOCATION OF ACTIVITY | Art classrooms |
| ACTIVITY LIMIT (IF APPLICABLE) | |
| DETAILS OF Curriculum<i>Plus</i> ACTIVITY Both Art rooms are open for you to explore the world of Art. Come along and develop your artistic skills under the supervision of our wonderful Art staff. | |

Arts award (Bronze/Silver

| | |
|--|-----------------------|
| STAFF MEMBER RUNNING ACTIVITY | Miss Deaton |
| YEAR OR KEY STAGE SUITABLE FOR | KS3 |
| DAY AND TIME OF ACTIVITY | Thursday after school |
| LOCATION OF ACTIVITY | Art classrooms |
| ACTIVITY LIMIT (IF APPLICABLE) | |
| DETAILS OF Curriculum<i>Plus</i> ACTIVITY Arts Award takes you on a creative journey, exploring the arts world, discovering your potential as artists, developing leadership skills – and gaining a recognised qualification along the way. Please see Miss Deaton if you are interested in joining Arts award! | |

Multi Sports

| | |
|--|---|
| STAFF MEMBER RUNNING ACTIVITY | PE Staff |
| YEAR OR KEY STAGE SUITABLE FOR | KS3 |
| DAY AND TIME OF ACTIVITY | Y7 Monday lunchtime, Y8 Tuesday lunchtime, Y8 Wednesday lunchtime, Y7 Thursday lunchtime. All years Friday before school (7:45am-8:15am). |
| LOCATION OF ACTIVITY | Sportshall |
| ACTIVITY LIMIT (IF APPLICABLE) | |
| DETAILS OF Curriculum<i>Plus</i> ACTIVITY Come down to the sports hall and further develop your skills in a range of different sports. The sport on offer will develop on what is being taught in the curriculum during that particular week/month. | |

KS3 Boys Football

| | |
|---|----------------------|
| STAFF MEMBER RUNNING ACTIVITY | RPE |
| YEAR OR KEY STAGE SUITABLE FOR | KS3 |
| DAY AND TIME OF ACTIVITY | Tuesday after school |
| LOCATION OF ACTIVITY | Sportshall |
| ACTIVITY LIMIT (IF APPLICABLE) | |
| DETAILS OF Curriculum<i>Plus</i> ACTIVITY Are you the next Jude Bellingham and Bukayo Saka? Come on down and showcase your skills! | |

Girls Football

| | |
|---|----------------------|
| STAFF MEMBER RUNNING ACTIVITY | JDA |
| YEAR OR KEY STAGE SUITABLE FOR | KS3 |
| DAY AND TIME OF ACTIVITY | Tuesday after school |
| LOCATION OF ACTIVITY | Sportshall |
| ACTIVITY LIMIT (IF APPLICABLE) | |
| DETAILS OF Curriculum<i>Plus</i> ACTIVITY Are you the next Alessia Russo and Lucy Bronze? Come on down and showcase your skills! | |

Physical Studies/CNAT PE

| | |
|--|-----------------------|
| STAFF MEMBER RUNNING ACTIVITY | RWA |
| YEAR OR KEY STAGE SUITABLE FOR | KS4 (Y10 and Y11) |
| DAY AND TIME OF ACTIVITY | Tuesday after school |
| LOCATION OF ACTIVITY | TBC – See Mr Walmsley |
| ACTIVITY LIMIT (IF APPLICABLE) | |
| DETAILS OF Curriculum<i>Plus</i> ACTIVITY Opportunity to get some additional help with any Physical Studies or Cambridge National PE queries. Chance to revise or catch up on coursework. | |

LGBTQ+

| | |
|---------------------------------------|------------------------|
| STAFF MEMBER RUNNING ACTIVITY | RTO and GWH |
| YEAR OR KEY STAGE SUITABLE FOR | All |
| DAY AND TIME OF ACTIVITY | Wednesday after school |
| LOCATION OF ACTIVITY | The Hive |
| ACTIVITY LIMIT (IF APPLICABLE) | |

DETAILS OF Curriculum*Plus* ACTIVITY

Do you have any queer queries? Not sure about all those labels and flags? Or maybe you just want to meet people who are LGBTQ+ in school? Well, if you answered yes to any of those, feel free to pop into our drop in sessions. We'll be discussing all things to do with finding out your identify, coming out to friends and family, and general LGBTQ+ topics, such as queer figures in history and what things you would like to see in our school to promote inclusivity. All students are welcome (we love our allies).



App Creation Session

| | |
|---|----------------------|
| STAFF MEMBER RUNNING ACTIVITY | GWA |
| YEAR OR KEY STAGE SUITABLE FOR | All |
| DAY AND TIME OF ACTIVITY | Tuesday after school |
| LOCATION OF ACTIVITY | PG4 |
| ACTIVITY LIMIT (IF APPLICABLE) | |
| DETAILS OF Curriculum<i>Plus</i> ACTIVITY Design an app, by coding in Java Script with either blocks or text, then share your app in seconds. You will be able to create your own simple app that you can use on your phone. While creating your app you will learn fundamental programming concepts along with program debugging. | |

| | |
|---------------------------------------|------------------------------|
| STAFF MEMBER RUNNING ACTIVITY | Miss Crossland |
| YEAR OR KEY STAGE SUITABLE FOR | Y10 and Y11 |
| DAY AND TIME OF ACTIVITY | Week 2, Tuesdays 2:55-3:55pm |
| LOCATION OF ACTIVITY | RF4 |
| ACTIVITY LIMIT (IF APPLICABLE) | 32 |

DETAILS OF Curriculum*Plus* ACTIVITY

Do you want to learn some science-specific revision techniques before your exams?

Do you want clarification on a topic you found difficult in lesson?

Were you absent from a lesson and want to catch up missed work?

Do you want more exam question practise?

This session can be what you want it to be. Miss Crossland can go through biology, chemistry and/or physics with you in a relaxed environment.

TEA/COFFEE/HOT CHOC AND BISCUITS PROVIDED 😊



Science Fiction Film Club

| | |
|---|---------------------|
| STAFF MEMBER RUNNING ACTIVITY | Mr Basford |
| YEAR OR KEY STAGE SUITABLE FOR | All years |
| DAY AND TIME OF ACTIVITY | Thursday both weeks |
| LOCATION OF ACTIVITY | RG5 |
| ACTIVITY LIMIT (IF APPLICABLE) | |
| DETAILS OF Curriculum<i>Plus</i> ACTIVITY Are you interested in science and want to watch some science-based movies? If so, this is the club for you so please come along. | |

Triple Physics

| | |
|---------------------------------------|---------------------------------------|
| STAFF MEMBER RUNNING ACTIVITY | Mr Basford |
| YEAR OR KEY STAGE SUITABLE FOR | Y10 and Y11 |
| DAY AND TIME OF ACTIVITY | Thursdays – both weeks – after school |
| LOCATION OF ACTIVITY | RG5 |
| ACTIVITY LIMIT (IF APPLICABLE) | |

DETAILS OF Curriculum*Plus* ACTIVITY

An opportunity for students to improve their Physics knowledge, whether you're a triple scientist or just have an interest in the subject.

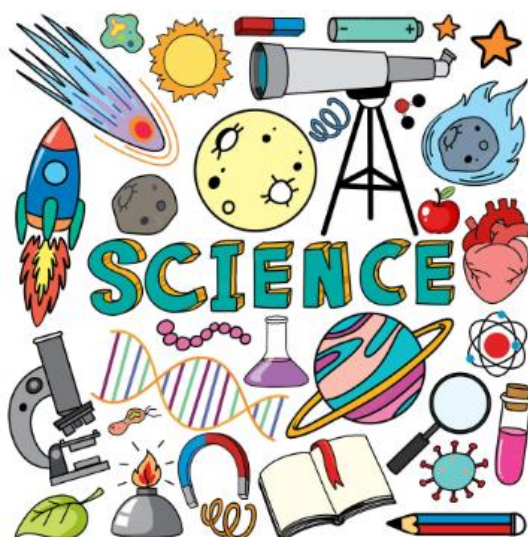


Triple Biology/Chemistry

| | |
|---------------------------------------|--------------------------------|
| STAFF MEMBER RUNNING ACTIVITY | Mrs Fennimore |
| YEAR OR KEY STAGE SUITABLE FOR | Y10 and Y11 |
| DAY AND TIME OF ACTIVITY | Week 1 Tuesdays – after school |
| LOCATION OF ACTIVITY | RF5 |
| ACTIVITY LIMIT (IF APPLICABLE) | |

DETAILS OF Curriculum*Plus* ACTIVITY

Do you take triple science as an option and want to improve your biology and chemistry knowledge? This is an excellent opportunity to access some further support.





THE
BOLSOVER
SCHOOL



REDHILL
ACADEMY TRUST
Equality and Achievement